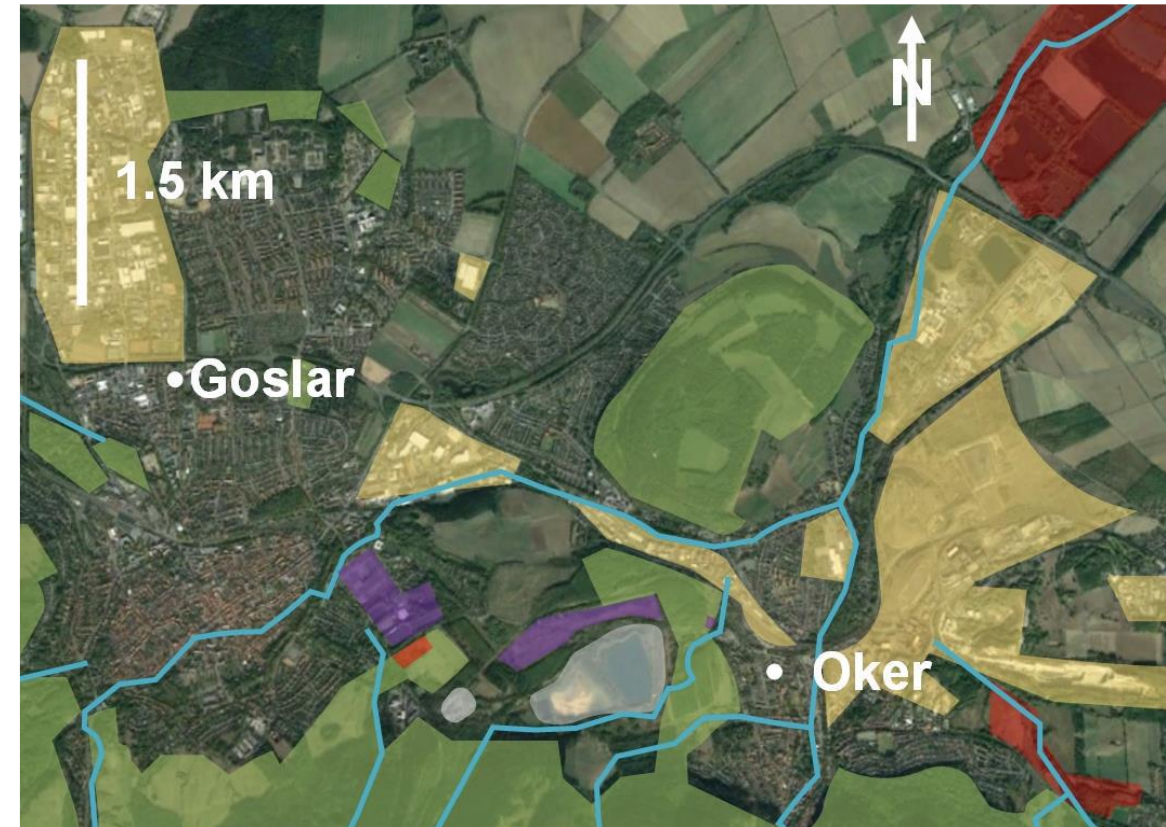


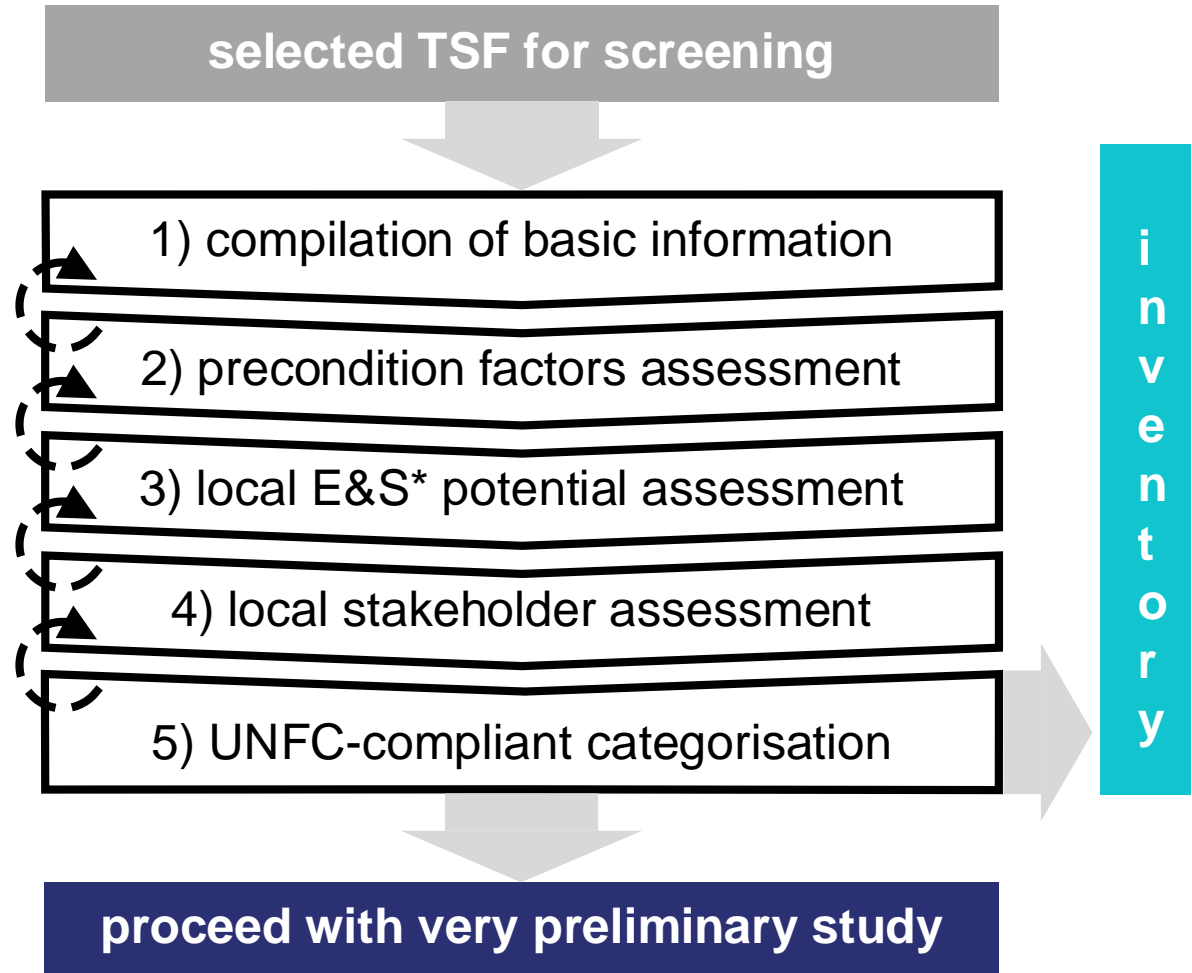
**A DESK-BASED SCREENING APPROACH
COMPLIANT WITH THE UNFC
TO IDENTIFY THE RAW MATERIALS
RECOVERY POTENTIAL
FROM BASE METAL TAILINGS**

Soraya Heuss-Aßbichler and Rudolf Suppes

Objective

- Develop & test a systematic screening approach for a quick & cost-efficient pre-selection of potentially viable base metal tailings deposits
- Application of the approach to the case study base metals tailings storage facility (TSF) Bollrich (Germany)
- The TSF was part of the Rammelsberg mining operation, where mainly Au, Ag, Pb, Cu, & Zn were produced.





*E&S: environmental & social

Five steps to identify the potentials & barriers of a raw materials deposit

Conclusion

Identified potentials:

- presence of CRMs & economically highly important metals with sufficiently large quantity for a viable recovery,
- demand for solutions due to high land use-related social tension at status quo
- Presence of favorable investment & infrastructure conditions is given

Identified barriers:

- little geological & geotechnical knowledge about the TSF,
- 18 different stakeholders – they might potentially reject the project

Thank you



Prof. Dr. Soraya HEUSS-ASSBICHLER
Ludwig-Maximilians-Universität München
e-mail: heuss@lmu.de



Rudolf SUPPES, M. Sc.
Gesellschaft für Consulting, Business und
Management mbH – CBM GmbH
e-mail: suppes@cbm-ac.de